



# THE SAPPHIRE

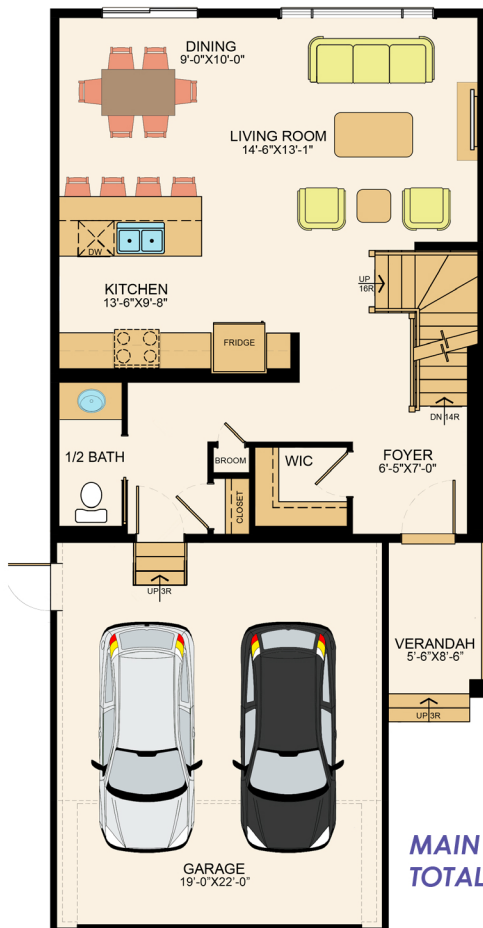
## *Craftsman Home Series*

3 bedrooms + lifestyle room, 2.5 bathrooms  
2 Storey | 1793 sq ft

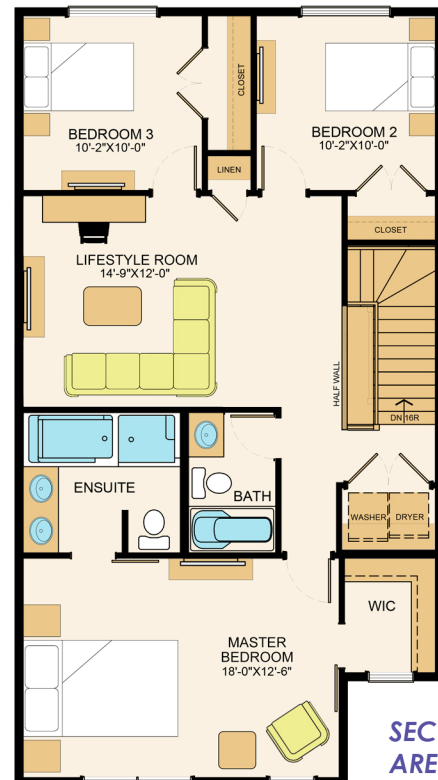


## FEATURES

- Modern Open Concept
- Bonus Lifestyle Room
- Five Piece Master Ensuite
- Upper Floor Laundry
- Upgraded Craftsman Exterior
- USB Plug-ins to All Bedrooms
- TV Cable to All Bedrooms



MAIN FLOOR AREA: 735 SQ FT  
TOTAL AREA: 1793 SQ FT



SECOND FLOOR  
AREA: 1058 SQ FT



Saskatoon & Region  
Home Builders'  
Association



[www.northprairiehomes.com](http://www.northprairiehomes.com)